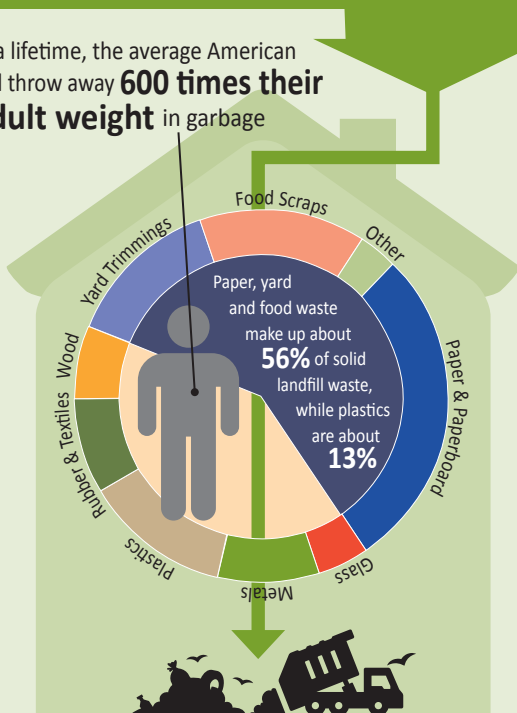


# HOME Pollution Prevention

*Though you may not realize it, the products you buy and throw away can have a significant impact on the environment.*

Materials that contribute to the **municipal solid waste stream.**

In a lifetime, the average American will throw away **600 times their adult weight** in garbage



## What can I do?

### REDUCE

the amount of trash discarded

### REUSE

containers and products

### RECYCLE

as much as possible



# What you can do to **protect the environment**

Leave your car at home –



**walk, bike or take public transportation** instead.



**Clean or replace** furnace, air conditioner and heat-pump filters. Get a programmable thermostat.



**Compost** yard and food wastes or see if your community has a composting or yard waste collection program.



Turn your **water heater temperature** to the warm setting and use an insulating blanket.



Buy **high-mileage tires** and remember to check your tire pressure monthly.



**Turn off** electronics, appliances and lights when not in use.



**Minimize your use** of fertilizer and pesticide.

**REDUCE** amount of materials you use



which **reduces** the amount of **waste** you create.



**REUSE** materials when possible.

**RECYCLE** as much as possible.

