

APPENDIX A

NPDES Permitted Dischargers and Municipal Separate Storm Sewer Systems in TMDL Project Area

Table A.1 NPDES permitted waste water dischargers in the Walnut Creek watershed.

OEPA permit number	HUC 14 (last 6 digits)	Facility name	Receiving stream(s)	Effective date	Expiration date	Design flow discharge (million gallons per day)
4IC00002	180-070	ALSCO Metals Corporation	Unnamed trib to Mud Run	6/1/2006	1/31/2011	0.019
4PC00005	180-070	Ashville WWTP	Walnut Cr (RM 4.45)	7/1/2007	6/30/2012	0.600
4PB00011	170-030	Baltimore WWTP	Walnut Cr (RM 40.05)	8/1/2008	7/31/2013	0.500
4PW00007	180-070	Bigham's Apartments	Walnut Cr (RM 0.8)	9/1/2004	8/31/2009	0.0032
4PB00012	180-010	Canal Winchester WWTP	Walnut Cr (RM 34.15)	10/1/2008	6/30/2013	2.480
4PS00015	170-050	Carroll WWTP	Unnamed trib to unnamed trib to Walnut Cr at RM 32.09	9/1/2007	8/31/2012	controlled discharge
4GS00011	180-030	Century Acres ²	Big Run (RM 1.75)	7/1/2005	12/31/2009	0.025
4GH00011	170-050	Columbia Gas Transmission Inc – Line B93 B111 site ²	Unnamed tributary to Walnut Creek at river mile 32.09	5/1/2009	10/31/2012	NA
4IN00185	180-070	Columbus Industries Inc	Mud Run	7/1/2009	6/30/2014	only cooling water
4PX00021	180-070	Cook Creek Golf Course	Walnut Cr (RM 0.42)	8/1/2005	7/31/2010	0.000526
4IM00104	180-010	EC Babbert Inc	Unnamed trib to Walnut Cr at RM 26.4	8/1/2007	9/30/2012	0.002
4PR00103	170-040	Fairfield Christian Church	Unnamed trib to unnamed trib to Poplar Cr at RM 5.27	4/1/2008	3/31/2013	0.003
4PJ00101	180-010	Little Walnut Sycamore WRF	Walnut Cr (RM 29.05)	7/1/2008	6/30/2013	0.750
4PR00028	180-030	Manns MHP	Unnamed trib to Walnut Cr at RM 9.96	2/1/2005	1/31/2010	0.080
4IY00132	170-010	Millersport WTP ¹	NA	8/1/2006	7/31/2011	controlled discharge

Walnut Creek Watershed TMDLs

OEPA permit number	HUC 14 (last 6 digits)	Facility name	Receiving stream(s)	Effective date	Expiration date	Design flow discharge (million gallons per day)
4IA00001	170-020	Newark Group Industries DBA Ohio Paperboard Corp	Unnamed trib to Pawpaw Cr	8/1/2004	7/31/2009	0.400
4PR00101	180-010	Old Town Tavern	Walnut Cr (RM 25.59)	10/1/2007	9/30/2012	0.001
4PB00017	170-060	Pickerington WWTP	Sycamore Creek	1/1/2008	12/31/2012	1.600 / 3.200 ¹
4IN00085	180-030	Rickenbacker International Airport	Walnut Cr (RMs 15.54 and 15.64) and Unnamed Trib to walnut cr at RM 9.96	1/1/2006	12/31/2010	variable discharge
4IC00015	170-020	Sakas Inc	Unnamed trib to Walnut Cr at RM 44.95	8/1/2005	7/31/2010	0.0006
4PX00038	170-020	Starlite Lanes WWTP	Unnamed trib to Walnut Cr at RM 44.95	7/1/2009	6/30/2014	0.0025
4PG00027	170-060	Sycamore Creek WRF	Sycamore Creek	8/1/2008	7/31/2013	0.800
4PA00005	170-010	Walnut Creek SD	Pleasantville Creek	8/1/2008	7/31/2013	0.181
4PT00117	180-060	Walnut Elem Sch	Bull Run	8/1/2007	7/31/2012	0.010
4PG00018	180-070	Walnut Heights Subdiv	Unnamed trib to Walnut Cr at RM 1.8	4/1/2007	3/31/2012	0.063
4IN00199	180-070	Wheeler's Sludge Holding Tank	NA	8/1/2008	7/31/2013	only sludge

1 These two numbers indicate existing and planned design flows (following plant expansion).

2 This facility is regulated under a general and not an individual NPDES permit.

Figure A.2 Map of the NPDES permitted municipal separate storm sewer system (MS4s) areas in the Walnut Creek watershed.

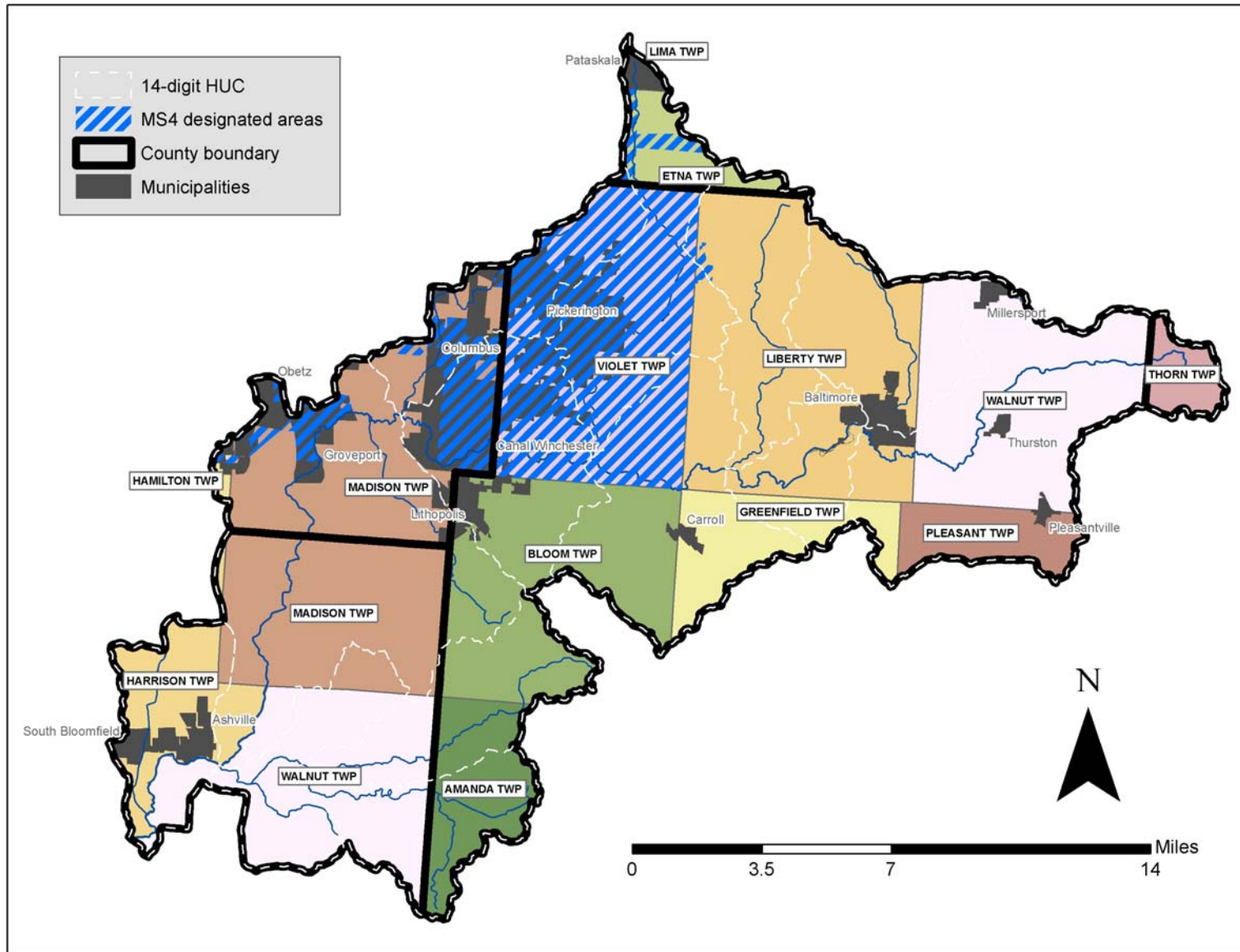


Table A.2 NPDES permitted municipal separate storm sewer system (MS4s) areas in the Walnut Creek watershed.

County	Permit No	Applicant Name	Issue Date
FAIRFIELD	4GQ10012*BG	CITY OF PICKERINGTON	5/26/2009
FAIRFIELD	4GQ10006*BG	FAIRFIELD COUNTY & OTHERS	4/1/2003
FRANKLIN	4GQ10005*AG	VILLAGE OF CANAL WINCHESTER	5/26/2009
FRANKLIN	4GQ10004*BG	VILLAGE OF GROVEPORT	5/26/2009
LICKING	4GQ10007*BG	CITY OF PATASKALA	5/26/2009